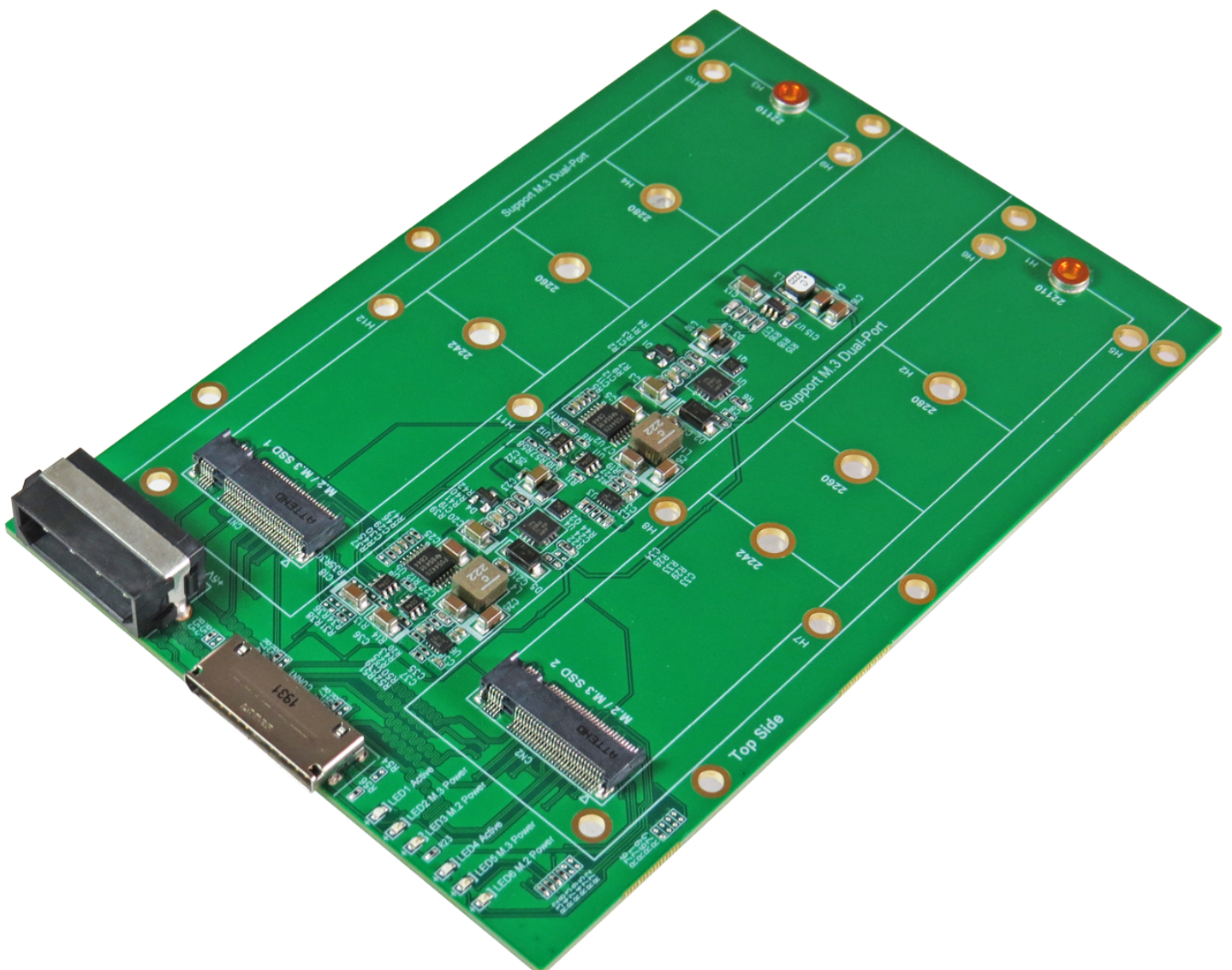


Innocard

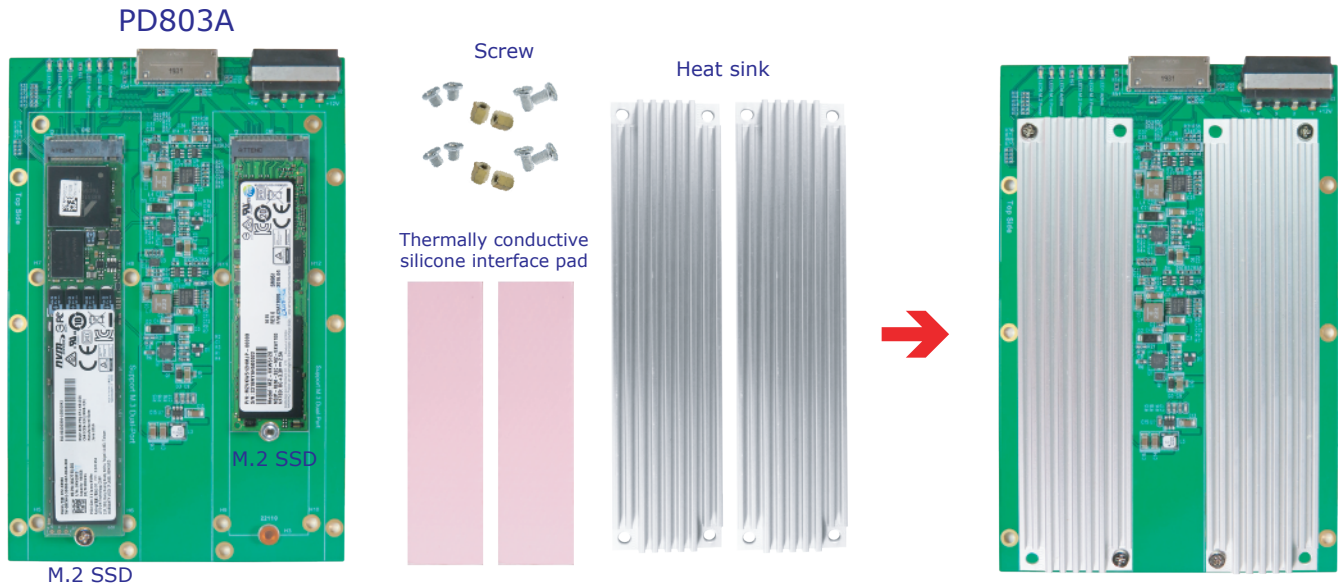
# Minerva

## PD803A

OCulink 8-Lane for dual ports M.2/M.3 NF1 NVMe SSD Adapter



## OCulink 8-Lane for dual ports M.2/M.3 NF1 NVMe SSD Adapter



### Features

- ※ Built-in SFF-8612 8x(OCulink) Female connector, pin defined by PCIe
- ※ Built-in M.2 M-key Female connector, pin-out defined by PCIe
- ※ D1 Green LED on indicates M.2 SSD power ready
- ※ D2 Green LED on indicates M.3 SSD power ready
- ※ D3 RED LED Blinking indicates M.2 or M.3 NF1 active status
- ※ D4 Green LED on indicates M.2 SSD power ready
- ※ D5 Green LED on indicates M.3 SSD power ready
- ※ D6 RED LED Blinking indicates M.2 or M.3 NF1 active status

### Specifications

- ※ Compliant with NVM Express 1.0a
- ※ Supports PCI Express Base Specification Rev 3.1
- ※ Compliant with PCI Express M.2 Specification Version 1.1
- ※ Compliant with Samsung M.3 Specification Ver. 0.4
- ※ Supports SSD\_Form\_Factor\_Version1\_a
- ※ Compliant with SFF-8612 Specification Rev 1.0
- ※ Compliant with SFF-9402 Specification Rev 1.0
- ※ Compliant with Broadcom MegaRAID and HBA Tri-mode Storage Adapter

### Supports the following M.2 & M.3 SSD form factor

- ※ Type 2242-D2-B-M: 42mm(L) x 22mm(W)
- ※ Type 2260-D2-B-M: 60mm(L) x 22mm(W)
- ※ Type 2280-D2-B-M: 80mm(L) x 22mm(W)
- ※ Type 22110-D2-B-M: 110mm(L) x 22mm(W)
- ※ Type 305110-D2-B-M: 110mm(L) x 30.5mm(W) for M.3 NF1

## Application

※ The adapter card PD803A is designed for using with **Broadcom MegaRAID Tri-mode Storage Adapter Table 1** as below :

MegaRAID 9460-16i  
 MegaRAID 9460-8i  
 MegaRAID 9480-8i8e  
 MegaRAID 9440-8i

**Table 1 MegaRAID Tri-Mode Storage Adapters**

Adapter	9460-16i	9460-8i	9480-8i8e	9440-8i
Ports	16 internal	8 internal	8 internal, 8 external	8 internal
I/O Processor	SAS3516	SAS3508	SAS3516	SAS3408
Form Factor	LP-MD2	LP-MD2	LP-MD2	LP-MD2
Storage Interface Connectors	Four SFF-8643 x4	Two SFF-8643 x4	Two SFF-8643 x4, Two SFF-8644 x4	Two SFF-8643 x4
Host Interface	x8 PCIe 3.1	x8 PCIe 3.1	x8 PCIe 3.1	x8 PCIe 3.1
Storage Interface	SAS, SATA, and PCIe (NVMe)	SAS, SATA, and PCIe (NVMe)	SAS, SATA, and PCIe (NVMe) <sup>a</sup>	SAS, SATA, and PCIe (NVMe)
Cache Memory	4 GB, 2133 MHz, DDR4 SDRAM	2 GB, 2133 MHz, DDR4 SDRAM	4 GB, 2133 MHz, DDR4 SDRAM	N/A
Cache Protection	Yes	Yes	Yes	N/A
Super Capacitor	CVPM05 module	CVPM05 module	CVPM05 module	N/A

a. NVMe is supported for internal connection only.

※ The adapter card PD803A is designed for using with **Broadcom HBA Tri-mode Storage Adapter Table 2** as below :

HBA 9400-16i  
 HBA 9400-8i  
 HBA 9400-8i8e  
 HBA 9405W-16i

**Table 2 HBA Tri-Mode Storage Adapters**

Adapter	9400-16i	9400-8i	9400-8i8e	9405W-16i
Ports	16 internal	8 internal	8 external, 8 internal	16 internal
I/O Processor	SAS3416	SAS3408	SAS3516	SAS3616W
Form Factor	LP-MD2	LP-MD2	LP-MD2	LP-MD2
Storage Interface Connectors	Four SFF-8643 x4	Two SFF-8643 x4	Two SFF-8643 x4, Two SFF-8644 x4	Four SFF-8643 x4
Host Interface	x8 PCIe 3.1	x8 PCIe 3.1	x8 PCIe 3.1	x16 PCIe 3.1
Storage Interface	SAS, SATA, and PCIe (NVMe)	SAS, SATA, and PCIe (NVMe)	SAS, SATA, and PCIe (NVMe) <sup>a</sup>	SAS, SATA, and PCIe (NVMe)

a. NVMe is supported for internal connection only.